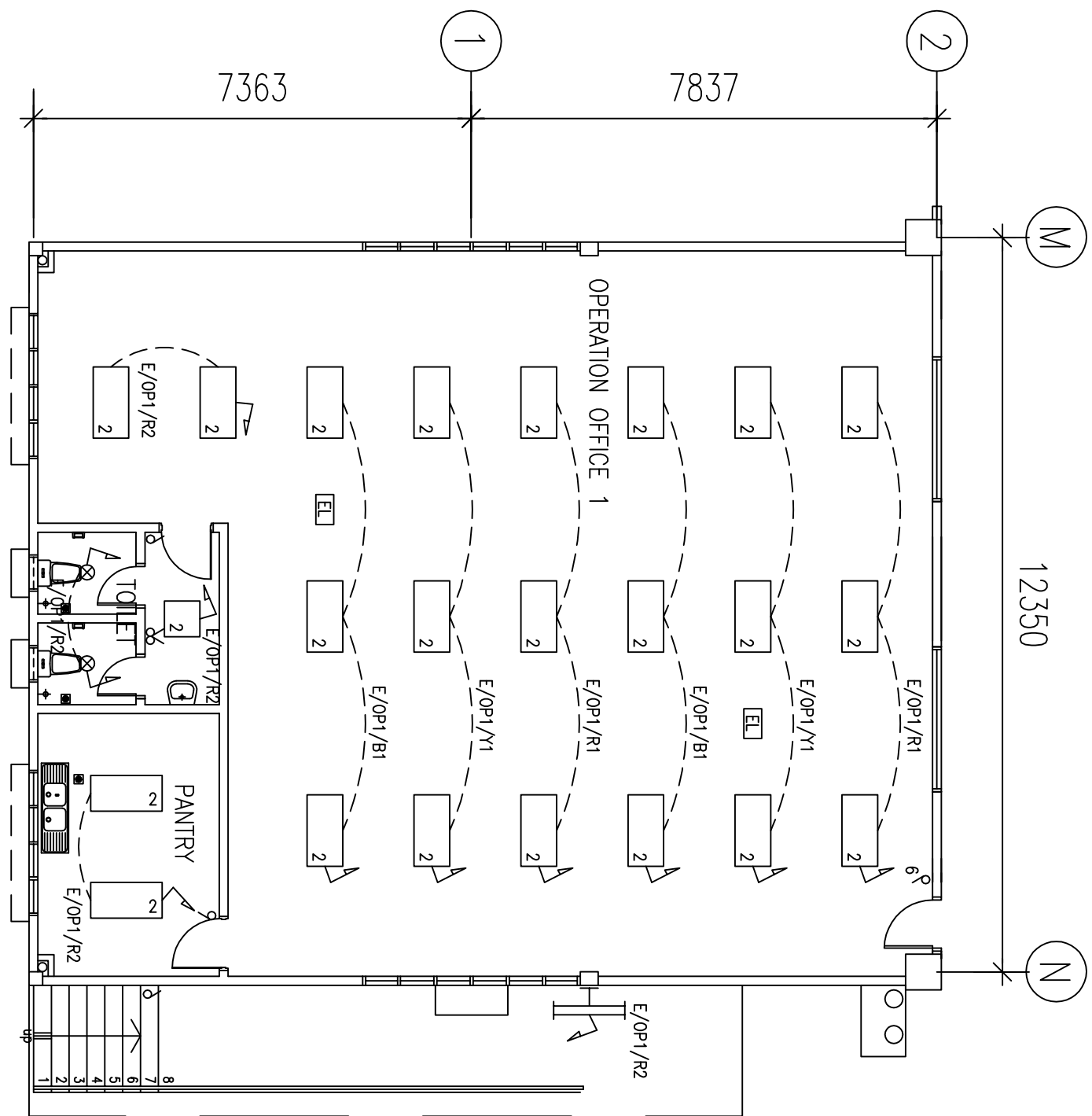
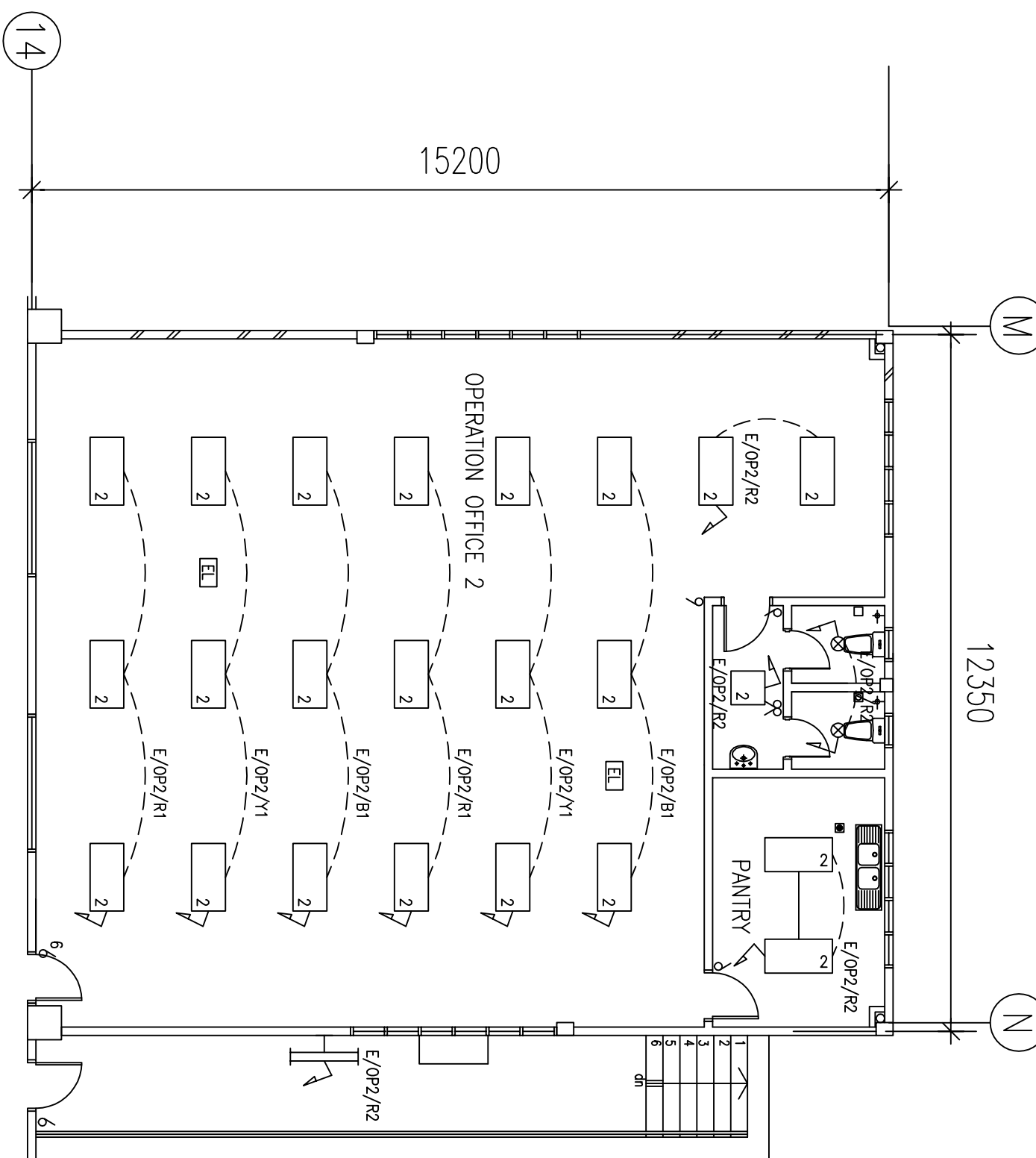


GROUND FLOOR - BATTERY CHARGING ROOM
SCALE 1:100



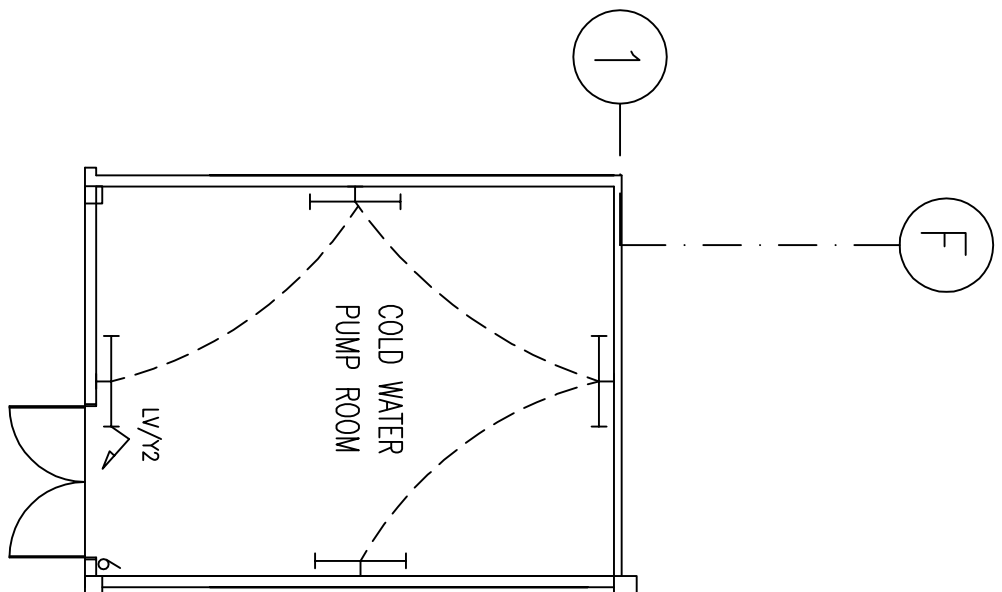
PLAN - GROUND FLOOR - OPERATION OFFICE 1
SCALE 1:100



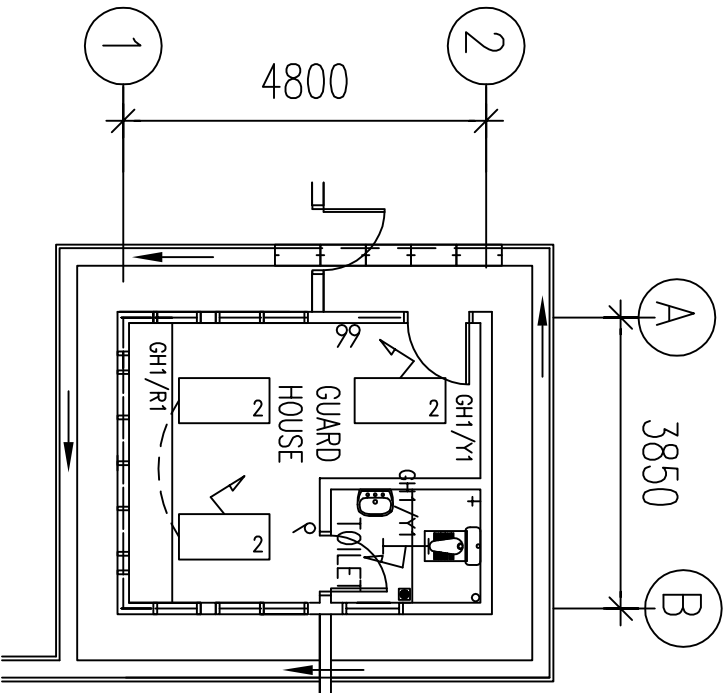
PLAN - GROUND FLOOR - OPERATION OFFICE 2
SCALE 1:100

LEGEND

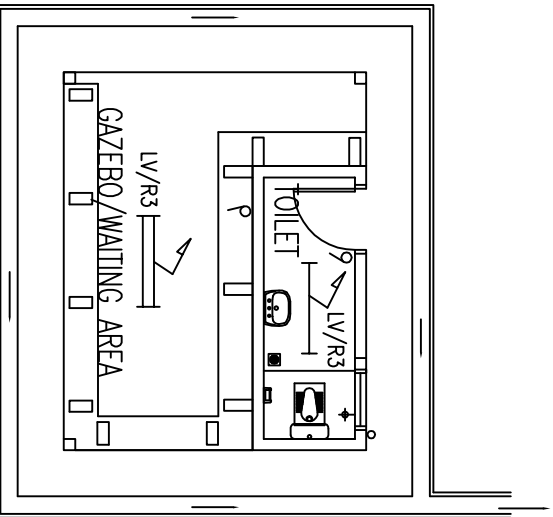
—	2x35W BARE CHANNEL FLUO. FITTING
—	1x35W BARE CHANNEL FLUO. FITTING
—	1x15W BARE CHANNEL FLUO. FITTING
—	2x35W RECESSED FLUO. LIGHT FITTING C/W FULL MIRROR REFLECTOR LAMPE.
—	2x15W RECESSED FLUO. LIGHT FITTING C/W FULL MIRROR REFLECTOR LAMPE.
—	10W P.L.C. RECESSED DOWN LIGHTING
—	20W P.L.C. RECESSED DOWN LIGHTING
—	20W CIRCULAR SURFACE MOUNTED P.L.C. DOWN LIGHT
—	SWITCH CENTRE
—	5A SWITCH
—	5A TWO WAY SWITCH
—	1x15W RECESSED SELF CONTAINED EMERGENCY LIGHT
—	2x15W SELF CONTAINED YELLOW' SON
—	250W HIBY LIGHT FITTING
—	2 x 20W RECESSED P.L.C. DOWN LIGHT
—	35W WALL MOUNTED FAN



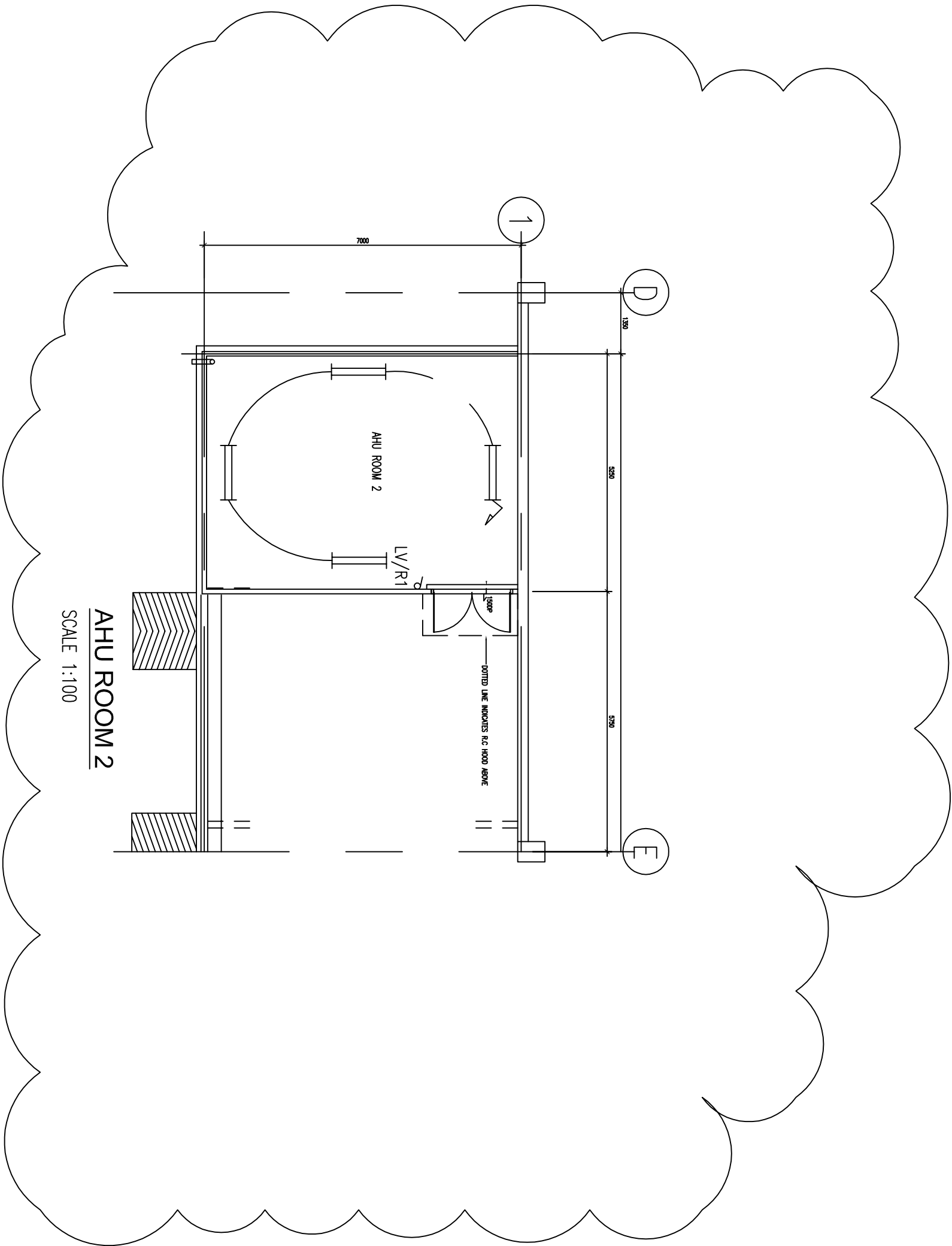
GROUND FLOOR - COLD WATER PUMP ROOM
SCALE 1:100



GROUND FLOOR - GUARD HOUSE
SCALE 1:100



GROUND FLOOR - GAZEBO/WAITING AREA
SCALE 1:100



AHU ROOM 2
SCALE 1:100

TAJUK PROJEK :

CADANGAN MEMBINA SEBUAH GUDANG
1 TINGKAT BERSERTA PEJABAT 3 TINGKAT,
YANG MENGGANDUNGI:-
PENCAMWANG ELEKTRIK TNB,
PUSAT PENGUMPULAN SAMPAH,
BILIK PAM,
1 UNIT PONDOK PENGAWAL DAN
1 UNIT RUANG MENINGGU 1 TINGKAT,
DI ALAMAT NO 9 (PT 33271)
JALAN TANG UB9/2,
SEKSYEN UB8,
PERINDUSTRIAN BUKIT JELUTONG,
40150 SHAH ALAM,
SELANGOR DARUL EHSAN

UNTUK
TETUAN ORYX IMPRESSIONS SDN. BHD.

TAMBAHAN & ALAMAT PENJAJAK :

ORYX IMPRESSIONS SDN. BHD. (no. no. 444444-X)
36-36, JALAN 5/105, OFF. JALAN KESAS,
KUALA KEMAMAN, KEMAMAN, TERENGGANU
TEL: 03- 9132 3018 FAX: 03-9132 7018

ARKITEK :

GIA ARCHITECTS
6-2-51, Tower 2, Menara RHB, No. 888, Jalan Rupa, No. 55100, Kuala Lumpur, Malaysia
TEL: 03-2601 1771 FAX: 03-2601 1855 E: gpa@giaarchitects.com
JURUTERA MAKE :

PERUNDING ATOZ
Jabatan Teknik - Jabatan Teknik

23B, JALAN SS15/4C, 47500 SUBANG JAYA, SELANGOR DARUL EHSAN
Tel: 03-8888111 Fax: 03-8888117 E-mail: perunding_atoz@mytel.net

WAREHOUSE – ANNEX BUILDING

TAJUK LUKSAN :

LIGHTING LAYOUT (SHEET 2 OF 2)

BUKUS	FTL	DISEMAK	SHB
SKALA	1 : 100	TARIKH	FEB 2008
NO. LUKSAN	508307/E/LSP/05	PROJEK	2

PELAN INI MENGANDUNGI HKK CIPTA

kontaktor hendaklah mengikut dimesi yang ada di dalam rajah. segala
dimensi mesti diperiksa dan disemak di tapak binaan. sekiranya selaluan
yang terdapat hendaklah dipaparkan kepada pihak/jurutera yang berkekuasa.